

TENSIONED ADVANTAGE® ELECTROL®

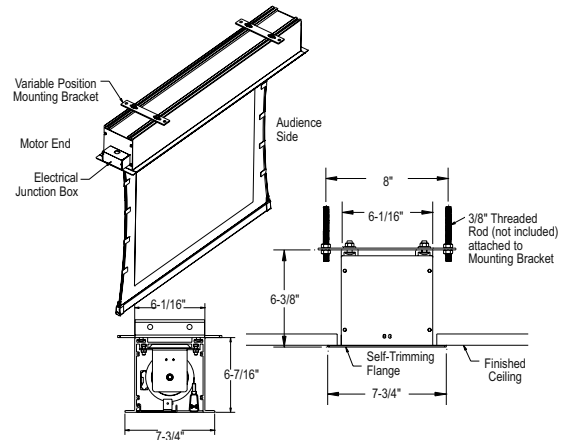
Concealed without Doors Electric Projection Screen

When ordering, make appropriate selections:

- Select size from charts at the lower right.
- Select viewing surface:
  - Da-Mat
  - High Contrast Da-Mat
  - Cinema Vision
  - High Contrast Cinema Vision
  - Pearlescent
  - Audio Vision
  - High Contrast Audio Vision
  - High Contrast Cinema Perf
  - Da-Tex (Rear)
  - Dual Vision
  - GREENGUARD® and GREENGUARD® Children and Schools Certified.

- Options:
  - Single Motor Low Voltage Control (LVC) - external.
  - Single Motor Low Voltage Control (LVC) - built-in.
  - Wireless Remote Control for LVC.
    - Radio Frequency Remote.
      - Radio Frequency Range Extender available
      - Infrared Remote.
  - Key Locking Cover Plate for 120V or LVC Switch.
  - Key Operated Switch for 120V only (NOTE: Cannot be used with LVC).
  - 220 Volt (50 Hz) Motor.
  - Video Projector Interface Control - external.
  - Video Projector Interface Control - built-in (Adds 10" to case length on 220V motor only)
  - SCB-100 RS-232 Serial Control Board - external.
    - NET-100 Ethernet-Serial Adapter
  - SCB-100 RS-232 Serial Control Board - built-in (adds 10" to overall length of case).
    - NET-100 Ethernet-Serial Adapter
  - SCB-200 RS-232 Serial Control Board - built-in (adds 10" to overall length of case).
    - NET-200 Ethernet-Serial Adapter
    - WC-200 Wall Controller
    - IR-200 Infrared Remote

Detailed dimensional drawings, wiring diagrams and installation instructions available upon request. Specifications subject to change without notice.



- Designed and developed with the installer and the installation process in mind.
- You can choose to receive the case and fabric together or have them sent separately to ensure that the screen surface is not damaged during the "rough-in" stages of construction.
- UL Plenum rated case.
- Tab guide cable system holds screen surface flat.

SUGGESTED SPECIFICATIONS:

\_\_\_\_\_ projection screen(s), \_\_\_\_\_ (H) x \_\_\_\_\_ (W), electrically operated 120 volt (60 Hz) not more than 2.4 amp. with a quick connect male plug-in connector on the motor. Shall have specially designed motor mounted inside the roller, to be three wire with ground, quick reversal type, oiled for life, with automatic thermal overload cutout, integral gears, capacitor and an electric brake to prevent coasting. To have preset but adjustable limit switches to automatically stop picture surface in the "up" and "down" positions. Junction box shall be externally integrated into the housing making it possible to install the housing and wire to the building's electrical system during construction. The junction box shall contain a quick connect connector that is mounted in the housing for easy plug-in connection to the motorized fabric and roller assembly. The motorized fabric and roller assembly to be installed in the case at the factory or at a later time at the job site. The fabric roller to be of rigid aluminum. Screen to be designed for left or right-hand motor installation. Screen fabric to be seamless, flame retardant and mildew resistant vinyl with black masking borders standard. Each side of the fabric to have tab guide cable system to maintain even lateral tension and hold surface flat. Custom slat bar with added weight maintains vertical tension on the screen surface. The ends of the slat to be protected by heavy duty plastic caps enclosing a preset adjustable mechanism for screen tensioning. Top, front and back of case to be made of extruded aluminum powder coated white. End caps to be of heavy gauge steel powder coated white. Bottom of case to have a removable access door. Door to be of extruded aluminum powder coated white. Bottom of case to be self-trimming, with a built-in flange around the bottom of the case. To be completed with a three-position control switch and cover plate. Suitable for use in environmental air space in accordance with section 300-22 (c) of the National Electric Code, and sections 2-128, 12-010 (3) and 12-100 of the Canadian Electrical Code, part 1, CSA C22.1. Screen to be listed by Underwriters' Laboratories.



All viewing surfaces will be seamless.  
 Audio Vision, High Contrast Audio Vision and High Contrast Cinema Perf available in sizes up to 87" x 116" in Video Format and 78" x 139" in HDTV Format.  
 All viewing surfaces are standard with black backing except Da-Tex® and Dual Vision.

4:3 VIDEO FORMAT DIMENSIONS

Viewing Area H x W	Nominal Diagonal	Overall Case Length	Approx. Shipping Wt. Lbs.
43" x 57"	72"	72½"	77
50" x 67"	84"	83½"	86
60" x 80"	100"	97½"	98
69" x 92"	120"	111½"	111
87" x 116"	150"	138½"	135
108" x 144"	180"	163½"	151
120" x 160"	200"	180½"	169

16:9 HDTV FORMAT DIMENSIONS

Viewing Area H x W	Nominal Diagonal	Overall Case Length	Approx. Shipping Wt. Lbs.
45" x 80"	92"	96"	92
52" x 92"	106"	108½"	99
54" x 96"	110"	113"	104
58" x 104"	119"	121½"	114
65" x 116"	133"	134½"	135
78" x 139"	159"	159½"	148
90" x 160"	184"	177½"	169

16:10 WIDE FORMAT DIMENSIONS

Viewing Area H x W	Nominal Diagonal	Overall Case Length	Approx. Shipping Wt. Lbs.
50" x 80"	94"	96½"	92
60" x 96"	113"	114"	104
69" x 110"	130"	129"	125
87" x 139"	164"	156½"	148

SQUARE FORMAT DIMENSIONS

Sizes H x W	Overall Case Length	Approx. Shipping Wt. Lbs.
50" x 50"	66½"	70
60" x 60"	77½"	80
70" x 70"	89"	90
84" x 84"	105½"	104
6' x 8'	115½"	114
8' x 8'	119"	116
7' x 9'	129½"	126
9' x 9'	128"	124
8' x 10'	143"	132
10' x 10'	140"	135
9' x 12'	163½"	151
12' x 12'	168½"	156

Overall case length dimensions ±¼".  
 Note: All sizes come standard with 12" black drop at top.  
 Note: Custom formats and sizes available upon request.  
 Note: Add 10" to overall case length for built-in SCB-100 or SCB-200.  
 Electrical junction box extends 2½" past case length on left end of case (1½" past ceiling flange). Internal junction box available (will add 3½" to overall case length and must be specified at time of order).