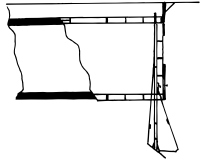


TRUSS SIZES: With Frame, Truss Legs and Poly Case(s) with Wheels
Da-Lite Poly Cases meet or exceed Air Transport Association (ATA) Specification 300 standards.

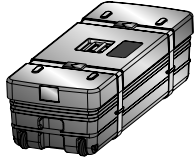


Da-Mat® Fast-Fold® Screen - Complete Kit

DA-MAT® SURFACE FRONT PROJECTION

Truss Complete Screen

Overall Size H x W	Net Picture Area	Da-Lite Number	Appr. Ship. Wt. (lbs.)	Freight Class	Suggested Retail
7' x 9'	6' x 8'	84812	122	85(UPS)	\$1755.00
8'6" x 11'	7'6" x 10'	84813	149	85(UPS)	2571.00
11' x 11'	10' x 10'	84814	151	85(UPS)	2779.00
10' x 13'	9' x 12'	84815	157	85(UPS)	2984.00
13' x 13'	12' x 12'	84816	160	85(UPS)	3245.00
Δ 8'6" x 14'4"	7'6" x 13'4"	99842	170	85(UPS)	2824.00
Δ 11'6" x 15'	10'6" x 14'	84817	176	85(UPS)	3313.00
Δ 10' x 17'	9' x 16'	87287	169	85(UPS)	3380.00
13' x 17'	12' x 16'	40517	188	85	3980.00
Δ 11' x 19'	10' x 18'	87288	187	85(UPS)	3633.00
Δ 11'6" x 19'8"	10'6" x 18'8"	99843	195	85(UPS)	3965.00
Δ 12'3" x 21'	11'3" x 20'	87289	202	85(UPS)	4636.00
16' x 21'	15' x 20'	40520	225	85	4975.00
Δ 13' x 22'4"	12' x 21'4"	99844	240	85	4811.00
† 9' x 25'	8' x 24'	40505	210	85	4805.00
Δ 14'6" x 25'	13'6" x 24'	87290	249	85	5363.00
† 19' x 25'	18' x 24'	40529	304	85	7761.00
Δ† 16' x 27'6"	15' x 26'6"	99845	325	85	7191.00



Fast-Fold® Poly Case with Wheels

DA-MAT® SURFACE FRONT PROJECTION

Truss Replacement Surface Only

Overall Size H x W	Net Picture Area	Da-Lite Number	Appr. Ship. Wt. (lbs.)	Freight Class	Suggested Retail
7' x 9'	6' x 8'	84818	14	85(UPS)	\$ 421.00
8'6" x 11'	7'6" x 10'	84819	20	85(UPS)	541.00
11' x 11'	10' x 10'	84820	18	85(UPS)	644.00
10' x 13'	9' x 12'	84821	21	85(UPS)	689.00
13' x 13'	12' x 12'	84822	23	85(UPS)	884.00
Δ 8'6" x 14'4"	7'6" x 13'4"	99818	23	85(UPS)	652.00
Δ 11'6" x 15'	10'6" x 14'	84823	23	85(UPS)	900.00
Δ 10' x 17'	9' x 16'	87291	22	85(UPS)	884.00
13' x 17'	12' x 16'	41603	32	85(UPS)	1159.00
Δ 11' x 19'	10' x 18'	87292	26	85(UPS)	1099.00
Δ 11'6" x 19'8"	10'6" x 18'8"	99819	35	85(UPS)	1197.00
Δ 12'3" x 21'	11'3" x 20'	87293	42	85(UPS)	1353.00
16' x 21'	15' x 20'	41606	42	85(UPS)	1761.00
Δ 13' x 22'4"	12' x 21'4"	99820	45	85(UPS)	1512.00
9' x 25'	8' x 24'	41591	25	85(UPS)	1180.00
Δ 14'6" x 25'	13'6" x 24'	87294	49	85(UPS)	1897.00
19' x 25'	18' x 24'	41615	55	85(UPS)	2477.00
Δ† 16' x 27'6"	15' x 26'6"	99821	62	85(UPS)	2297.00

† With "L" Section and Back Braces

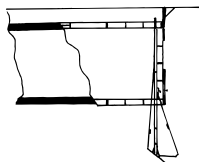
Δ HDTV Formats

NOTE: All Fast-Fold® surfaces up to 16' high will be seamless.

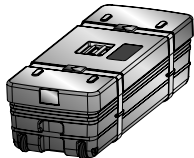
Other formats available upon request. Call for quotation.



Fast-Fold® Truss Replacement Surface



Da-Tex® Fast-Fold®
Screen - Complete Kit



Fast-Fold® Poly Case
with Wheels

DA-TEX® SURFACE REAR PROJECTION Truss Complete Screen

Overall Size H x W	Net Picture Area	Da-Lite Number	Appr. Ship. Wt. (lbs.)	Freight Class	Suggested Retail
7' x 9'	6' x 8'	84824	122	85(UPS)	\$1997.00
8'6" x 11'	7'6" x 10'	84825	149	85(UPS)	2963.00
11' x 11'	10' x 10'	84826	151	85(UPS)	3332.00
10' x 13'	9' x 12'	84827	157	85(UPS)	3580.00
13' x 13'	12' x 12'	84828	160	85(UPS)	4180.00
Δ 8'6" x 14'4"	7'6" x 13'4"	99846	170	85(UPS)	3388.00
11'6" x 15'	10'6" x 14'	84829	176	85(UPS)	4268.00
Δ 10' x 17'	9' x 16'	87295	169	85(UPS)	3916.00
13' x 17'	12' x 16'	40518	188	85	5085.00
Δ 11' x 19'	10' x 18'	87296	187	85(UPS)	4812.00
Δ 11'6" x 19'8"	10'6" x 18'8"	99847	195	85(UPS)	5249.00
Δ 12'3" x 21'	11'3" x 20'	87297	202	85(UPS)	5921.00
16' x 21'	15' x 20'	40521	225	85	6765.00
Δ 13' x 22'4"	12' x 21'4"	99848	240	85	6323.00
† 9' x 25'	8' x 24'	40506	210	85	5479.00
Δ 14'6" x 25'	13'6" x 24'	87298	249	85	7292.00
† 19' x 25'	18' x 24'	40530	304	85	8725.00
Δ† 16' x 27'6"	15' x 26'6"	99849	325	85	8085.00



Fast-Fold® Truss
Replacement Surface

DA-TEX® SURFACE REAR PROJECTION Truss Replacement Surface Only

Overall Size H x W	Net Picture Area	Da-Lite Number	Appr. Ship. Wt. (lbs.)	Freight Class	Suggested Retail
7' x 9'	6' x 8'	84830	14	85(UPS)	\$ 511.00
8'6" x 11'	7'6" x 10'	84831	20	85(UPS)	761.00
11' x 11'	10' x 10'	84832	18	85(UPS)	972.00
10' x 13'	9' x 12'	84833	21	85(UPS)	1044.00
13' x 13'	12' x 12'	84834	23	85(UPS)	1360.00
Δ 8'6" x 14'4"	7'6" x 13'4"	99822	23	85(UPS)	989.00
11'6" x 15'	10'6" x 14'	84835	23	85(UPS)	1387.00
Δ 10' x 17'	9' x 16'	87299	22	85(UPS)	1139.00
13' x 17'	12' x 16'	41604	32	85(UPS)	1772.00
Δ 11' x 19'	10' x 18'	87300	26	85(UPS)	1676.00
Δ 11'6" x 19'8"	10'6" x 18'8"	99823	35	85(UPS)	1828.00
Δ 12'3" x 21'	11'3" x 20'	87301	42	85(UPS)	2063.00
16' x 21'	15' x 20'	41607	42	85(UPS)	2687.00
Δ 13' x 22'4"	12' x 21'4"	99824	45	85(UPS)	2341.00
9' x 25'	8' x 24'	41592	25	85(UPS)	1801.00
Δ 14'6" x 25'	13'6" x 24'	87302	49	85(UPS)	2897.00
19' x 25'	18' x 24'	41616	55	85(UPS)	3887.00
Δ† 16' x 27'6"	15' x 26'6"	99825	62	85(UPS)	3599.00

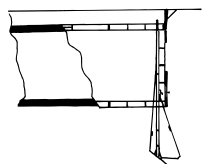
† With "L" Section and Back Braces

Δ HDTV Formats

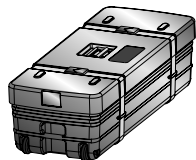
NOTE: All Fast-Fold® surfaces up to 16' high will be seamless.

Other formats available upon request. Call for quotation.

HIGH CONTRAST DA-TEX® SURFACE REAR PROJECTION Truss Complete Screen



High Contrast Da-Tex® Fast-Fold® Screen - Complete Kit



Fast-Fold® Poly Case with Wheels

Overall Size H x W	Net Picture Area	Da-Lite Number	Appr. Ship. Wt. (lbs.)	Freight Class	Suggested Retail
7' x 9'	6' x 8'	95718	122	85(UPS)	\$1997.00
8'6" x 11'	7'6" x 10'	95719	149	85(UPS)	2963.00
11' x 11'	10' x 10'	95720	151	85(UPS)	3332.00
10' x 13'	9' x 12'	95721	157	85(UPS)	3580.00
13' x 13'	12' x 12'	95722	160	85(UPS)	4180.00
Δ 8'6" x 14'4"	7'6" x 13'4"	99850	170	85(UPS)	3388.00
11'6" x 15'	10'6" x 14'	95723	176	85(UPS)	4268.00
Δ 10' x 17'	9' x 16'	95724	169	85(UPS)	3916.00
13' x 17'	12' x 16'	95728	188	85	5085.00
Δ 11' x 19'	10' x 18'	95725	187	85(UPS)	4812.00
Δ 11'6" x 19'8"	10'6" x 18'8"	99851	195	85(UPS)	5249.00
Δ 12'3" x 21'	11'3" x 20'	95726	202	85(UPS)	5921.00
16' x 21'	15' x 20'	95730	225	85	6765.00
Δ 13' x 22'4"	12' x 21'4"	99852	240	85	6323.00
† 9' x 25'	8' x 24'	95727	210	85	5479.00
Δ 14'6" x 25'	13'6" x 24'	95729	249	85	7292.00
† 19' x 25'	18' x 24'	95731	304	85	8725.00
Δ† 16' x 27'6"	15' x 26'6"	99853	325	85	8085.00



Fast-Fold® Truss Replacement Surface

HIGH CONTRAST DA-TEX® SURFACE REAR PROJECTION Truss Replacement Surface Only

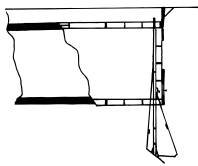
Overall Size H x W	Net Picture Area	Da-Lite Number	Appr. Ship. Wt. (lbs.)	Freight Class	Suggested Retail
7' x 9'	6' x 8'	95732	14	85(UPS)	\$ 511.00
8'6" x 11'	7'6" x 10'	95733	20	85(UPS)	761.00
11' x 11'	10' x 10'	95734	18	85(UPS)	972.00
10' x 13'	9' x 12'	95735	21	85(UPS)	1044.00
13' x 13'	12' x 12'	95736	23	85(UPS)	1360.00
Δ 8'6" x 14'4"	7'6" x 13'4"	99826	23	85(UPS)	989.00
11'6" x 15'	10'6" x 14'	95737	23	85(UPS)	1387.00
Δ 10' x 17'	9' x 16'	95738	22	85(UPS)	1139.00
13' x 17'	12' x 16'	95742	32	85(UPS)	1772.00
Δ 11' x 19'	10' x 18'	95739	26	85(UPS)	1676.00
Δ 11'6" x 19'8"	10'6" x 18'8"	99827	35	85(UPS)	1828.00
Δ 12'3" x 21'	11'3" x 20'	95740	42	85(UPS)	2063.00
16' x 21'	15' x 20'	95744	42	85(UPS)	2687.00
Δ 13' x 22'4"	12' x 21'4"	99828	45	85(UPS)	2341.00
9' x 25'	8' x 24'	95741	25	85(UPS)	1801.00
Δ 14'6" x 25'	13'6" x 24'	95743	49	85(UPS)	2897.00
19' x 25'	18' x 24'	95745	55	85(UPS)	3887.00
Δ† 16' x 27'6"	15' x 26'6"	99829	62	85(UPS)	3599.00

† With "L" Section and Back Braces

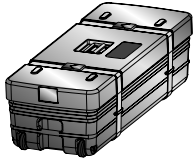
Δ HDTV Formats

NOTE: All Fast-Fold® surfaces up to 16' high will be seamless.

Other formats available upon request. Call for quotation.



Dual Vision
Fast-Fold® Screen -
Complete Kit



Fast-Fold® Poly Case
with Wheels

DUAL VISION SURFACE FRONT AND REAR PROJECTION Truss Complete Screen

Overall Size H x W	Net Picture Area	Da-Lite Number	Appr. Ship. Wt. (lbs.)	Freight Class	Suggested Retail
7' x 9'	6' x 8'	84860	122	85(UPS)	\$2064.00
8'6" x 11'	7'6" x 10'	84861	149	85(UPS)	3061.00
11' x 11'	10' x 10'	84862	151	85(UPS)	3057.00
10' x 13'	9' x 12'	84863	157	85(UPS)	3283.00
13' x 13'	12' x 12'	84864	160	85(UPS)	4169.00
Δ 8'6" x 14'4"	7'6" x 13'4"	99862	170	85(UPS)	3107.00
11'6" x 15'	10'6" x 14'	84865	176	85(UPS)	4287.00
Δ 10' x 17'	9' x 16'	87319	169	85(UPS)	3776.00
13' x 17'	12' x 16'	81519	188	85	4904.00
Δ 11' x 19'	10' x 18'	87320	187	85(UPS)	4643.00
Δ 11'6" x 19'8"	10'6" x 18'8"	99863	195	85(UPS)	5063.00
Δ 12'3" x 21'	11'3" x 20'	87321	202	85(UPS)	5713.00
16' x 21'	15' x 20'	81520	225	85	6265.00
Δ 13' x 22'4"	12' x 21'4"	99864	240	85	5985.00
† 9' x 25'	8' x 24'	81517	210	85	5836.00
Δ 14'6" x 25'	13'6" x 24'	87322	249	85	6752.00
† 19' x 25'	18' x 24'	81522	304	85	8641.00
Δ† 16' x 27'6"	15' x 26'6"	99865	325	85	8007.00



Fast-Fold® Truss
Replacement Surface

DUAL VISION SURFACE FRONT AND REAR PROJECTION Truss Replacement Surface Only

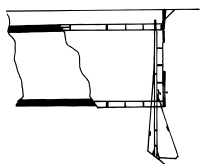
Overall Size H x W	Net Picture Area	Da-Lite Number	Appr. Ship. Wt. (lbs.)	Freight Class	Suggested Retail
7' x 9'	6' x 8'	84866	14	85(UPS)	\$ 520.00
8'6" x 11'	7'6" x 10'	84867	20	85(UPS)	771.00
11' x 11'	10' x 10'	84868	18	85(UPS)	985.00
10' x 13'	9' x 12'	84869	21	85(UPS)	1056.00
13' x 13'	12' x 12'	84870	23	85(UPS)	1371.00
Δ 8'6" x 14'4"	7'6" x 13'4"	99838	23	85(UPS)	1001.00
11'6" x 15'	10'6" x 14'	84871	23	85(UPS)	1399.00
Δ 10' x 17'	9' x 16'	87323	22	85(UPS)	1117.00
13' x 17'	12' x 16'	81510	32	85(UPS)	1781.00
Δ 11' x 19'	10' x 18'	87324	26	85(UPS)	1687.00
Δ 11'6" x 19'8"	10'6" x 18'8"	99839	35	85(UPS)	1839.00
Δ 12'3" x 21'	11'3" x 20'	87325	42	85(UPS)	2076.00
16' x 21'	15' x 20'	81511	42	85(UPS)	2700.00
Δ 13' x 22'4"	12' x 21'4"	99840	45	85(UPS)	2359.00
9' x 25'	8' x 24'	81508	25	85(UPS)	1811.00
Δ 14'6" x 25'	13'6" x 24'	87326	49	85(UPS)	2912.00
19' x 25'	18' x 24'	81513	55	85(UPS)	3809.00
Δ† 16' x 27'6"	15' x 26'6"	99841	62	85(UPS)	3529.00

† With "L" Section and Back Braces

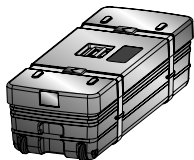
Δ HDTV Formats

NOTE: All Fast-Fold® surfaces up to 16' high will be seamless.

Other formats available upon request. Call for quotation.



Ultra Wide Angle Fast-Fold® Screen - Complete Kit



Fast-Fold® Poly Case with Wheels

ULTRA WIDE ANGLE SURFACE REAR PROJECTION Truss Complete Screen

Overall Size H x W	Net Picture Area	Da-Lite Number	Appr. Ship. Wt. (lbs.)	Freight Class	Suggested Retail
7' x 9'	6' x 8'	35489	122	85(UPS)	\$2064.00
8'6" x 11'	7'6" x 10'	35490	149	85(UPS)	3061.00
11' x 11'	10' x 10'	35491	151	85(UPS)	3057.00
10' x 13'	9' x 12'	35492	157	85(UPS)	3283.00
13' x 13'	12' x 12'	35493	160	85(UPS)	4169.00
Δ 8'6" x 14'4"	7'6" x 13'4"	35494	170	85(UPS)	3107.00
11'6" x 15'	10'6" x 14'	35495	176	85(UPS)	4287.00
Δ 10' x 17'	9' x 16'	35496	169	85(UPS)	3776.00
13' x 17'	12' x 16'	35497	188	85	4904.00
Δ 11' x 19'	10' x 18'	35498	187	85(UPS)	4643.00
Δ 11'6" x 19'8"	10'6" x 18'8"	35499	195	85(UPS)	5063.00
Δ 12'3" x 21'	11'3" x 20'	35500	202	85(UPS)	5713.00
16' x 21'	15' x 20'	35501	225	85	6265.00
Δ 13' x 22'4"	12' x 21'4"	35502	240	85	5985.00
† 9' x 25'	8' x 24'	35503	210	85	5836.00
Δ 14'6" x 25'	13'6" x 24'	35504	249	85	6752.00
† 19' x 25'	18' x 24'	35505	304	85	8641.00
Δ† 16' x 27'6"	15' x 26'6"	35506	325	85	8007.00



Fast-Fold® Truss Replacement Surface

ULTRA WIDE ANGLE SURFACE REAR PROJECTION Truss Replacement Surface Only

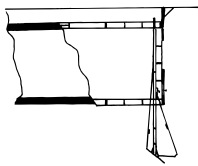
Overall Size H x W	Net Picture Area	Da-Lite Number	Appr. Ship. Wt. (lbs.)	Freight Class	Suggested Retail
7' x 9'	6' x 8'	35471	14	85(UPS)	\$ 520.00
8'6" x 11'	7'6" x 10'	35472	20	85(UPS)	771.00
11' x 11'	10' x 10'	35473	18	85(UPS)	985.00
10' x 13'	9' x 12'	35474	21	85(UPS)	1056.00
13' x 13'	12' x 12'	35475	23	85(UPS)	1371.00
Δ 8'6" x 14'4"	7'6" x 13'4"	35476	23	85(UPS)	1001.00
11'6" x 15'	10'6" x 14'	35477	23	85(UPS)	1399.00
Δ 10' x 17'	9' x 16'	35478	22	85(UPS)	1117.00
13' x 17'	12' x 16'	35479	32	85(UPS)	1781.00
Δ 11' x 19'	10' x 18'	35480	26	85(UPS)	1687.00
Δ 11'6" x 19'8"	10'6" x 18'8"	35481	35	85(UPS)	1839.00
Δ 12'3" x 21'	11'3" x 20'	35482	42	85(UPS)	2076.00
16' x 21'	15' x 20'	35483	42	85(UPS)	2700.00
Δ 13' x 22'4"	12' x 21'4"	35484	45	85(UPS)	2359.00
9' x 25'	8' x 24'	35485	25	85(UPS)	1811.00
Δ 14'6" x 25'	13'6" x 24'	35486	49	85(UPS)	2912.00
19' x 25'	18' x 24'	35487	55	85(UPS)	3809.00
Δ† 16' x 27'6"	15' x 26'6"	35488	62	85(UPS)	3529.00

† With "L" Section and Back Braces

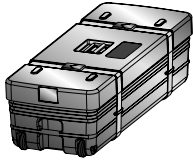
Δ HDTV Formats

NOTE: All Fast-Fold® surfaces up to 16' high will be seamless.

Other formats available upon request. Call for quotation.



3D Virtual Black
Fast-Fold® Screen -
Complete Kit



Fast-Fold® Poly Case
with Wheels

3D VIRTUAL BLACK SURFACE REAR PROJECTION Truss Complete Screen

Overall Size H x W	Net Picture Area	Da-Lite Number	Appr. Ship. Wt. (lbs.)	Freight Class	Suggested Retail
7' x 9'	6' x 8'	36051	122	85(UPS)	\$2125.00
8'6" x 11'	7'6" x 10'	36052	149	85(UPS)	3153.00
11' x 11'	10' x 10'	36053	151	85(UPS)	3575.00
10' x 13'	9' x 12'	36054	157	85(UPS)	3841.00
13' x 13'	12' x 12'	36055	160	85(UPS)	4520.00
Δ 8'6" x 14'4"	7'6" x 13'4"	36056	170	85(UPS)	3636.00
11'6" x 15'	10'6" x 14'	36057	176	85(UPS)	4615.00
Δ 10' x 17'	9' x 16'	36058	169	85(UPS)	4201.00
13' x 17'	12' x 16'	36059	188	85	5528.00
Δ 11' x 19'	10' x 18'	36060	187	85(UPS)	5231.00
Δ 11'6" x 19'8"	10'6" x 18'8"	36061	195	85(UPS)	5707.00
Δ 12'3" x 21'	11'3" x 20'	36062	202	85(UPS)	6437.00
16' x 21'	15' x 20'	36063	225	85	7437.00
Δ 13' x 22'4"	12' x 21'4"	36064	240	85	6908.00
† 9' x 25'	8' x 24'	36065	210	85	5929.00
Δ 14'6" x 25'	13'6" x 24'	36066	249	85	8016.00
† 19' x 25'	18' x 24'	36067	304	85	9697.00
Δ† 16' x 27'6"	15' x 26'6"	36068	325	85	8985.00



Fast-Fold® Truss
Replacement Surface

3D VIRTUAL BLACK SURFACE REAR PROJECTION Truss Replacement Surface Only

Overall Size H x W	Net Picture Area	Da-Lite Number	Appr. Ship. Wt. (lbs.)	Freight Class	Suggested Retail
7' x 9'	6' x 8'	36033	14	85(UPS)	\$ 639.00
8'6" x 11'	7'6" x 10'	36034	20	85(UPS)	952.00
11' x 11'	10' x 10'	36035	18	85(UPS)	1215.00
10' x 13'	9' x 12'	36036	21	85(UPS)	1305.00
13' x 13'	12' x 12'	36037	23	85(UPS)	1700.00
Δ 8'6" x 14'4"	7'6" x 13'4"	36038	23	85(UPS)	1237.00
11'6" x 15'	10'6" x 14'	36039	23	85(UPS)	1733.00
Δ 10' x 17'	9' x 16'	36040	22	85(UPS)	1424.00
13' x 17'	12' x 16'	36041	32	85(UPS)	2215.00
Δ 11' x 19'	10' x 18'	36042	26	85(UPS)	2095.00
Δ 11'6" x 19'8"	10'6" x 18'8"	36043	35	85(UPS)	2285.00
Δ 12'3" x 21'	11'3" x 20'	36044	42	85(UPS)	2579.00
16' x 21'	15' x 20'	36045	42	85(UPS)	3359.00
Δ 13' x 22'4"	12' x 21'4"	36046	45	85	2927.00
9' x 25'	8' x 24'	36047	25	85(UPS)	2252.00
Δ 14'6" x 25'	13'6" x 24'	36048	49	85(UPS)	3621.00
19' x 25'	18' x 24'	36049	55	85(UPS)	4859.00
Δ† 16' x 27'6"	15' x 26'6"	36050	62	85	4499.00

† With "L" Section and Back Braces

Δ HDTV Formats

NOTE: All Fast-Fold® surfaces up to 16' high will be seamless.

Other formats available upon request. Call for quotation.